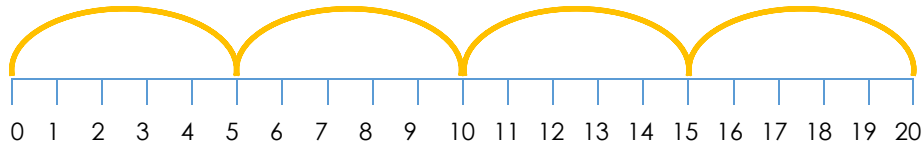




YR2 PROGRESSION IN MASTERY LESSON PACK - MAKE EQUAL GROUPS (GROUPING)

FLUENCY 1

Use the number line to complete the stem sentence.



From 20, you can make _____ groups of 5.

FLUENCY 2



There are 60 books altogether on a bookcase.
There are 10 books on each shelf.

How many shelves are there?

FLUENCY 3

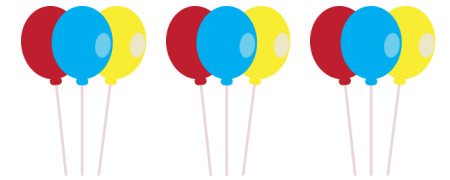
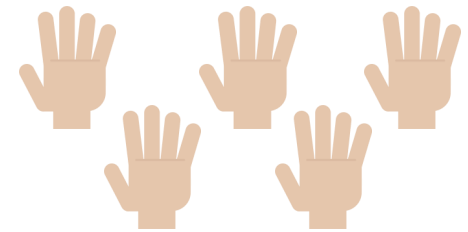
Match the calculation to the image.

$$20 \div 4$$

$$12 \div 4$$

$$25 \div 5$$

$$9 \div 3$$

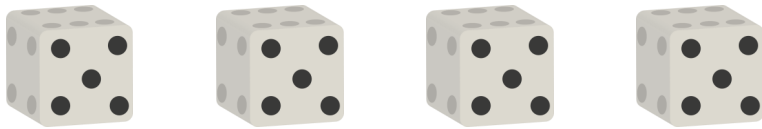




YR2 PROGRESSION IN MASTERY LESSON PACK - MAKE EQUAL GROUPS (GROUPING)

REASONING 1

The children are discussing the dice.



Marlon

It shows...

$$5 + 5 + 5 + 5 = 20$$

I think it is saying...

$$20 \div 5 = 4$$

Caleb

Darcey

No, it is...

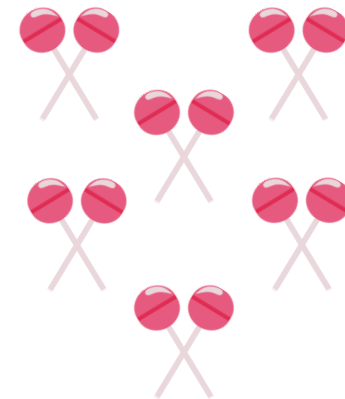
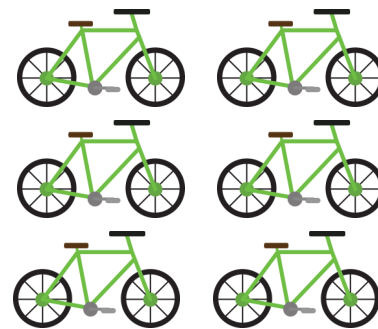
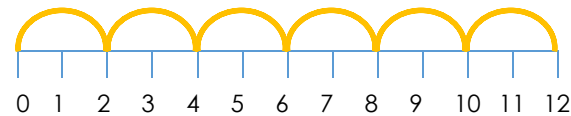
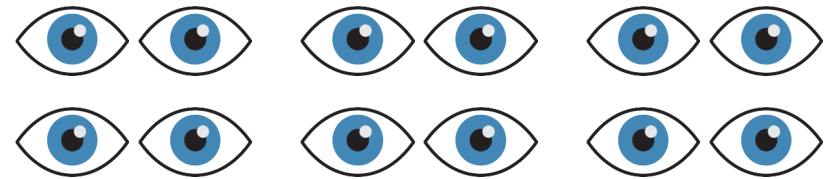
$$5 \times 4 = 20$$

Who is correct? Explain why!

REASONING 2

Which visual does not represent the calculation?

$$12 \div 2 = 6$$



© Copyright Deepening Understanding LTD 2019

Photocopiable for educational purposes only



YR2 PROGRESSION IN MASTERY LESSON PACK - MAKE EQUAL GROUPS (GROUPING)

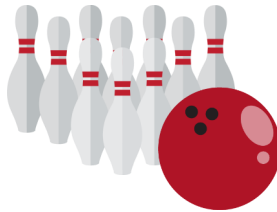
PROBLEM SOLVING 1

Asha plays team games at Brownies.

Below are the games they play and how many children are allowed in each team.



Teams of 10



Teams of 4



Teams of 5



Teams of 6

Today, there are more than 14 but less than 21 children there.

Work out how many children could be at Brownies and what sports they would be able to play.

For each sport, note how many teams there might be.

Find all possibilities!



© Copyright Deepening Understanding LTD 2019

Photocopiable for educational purposes only